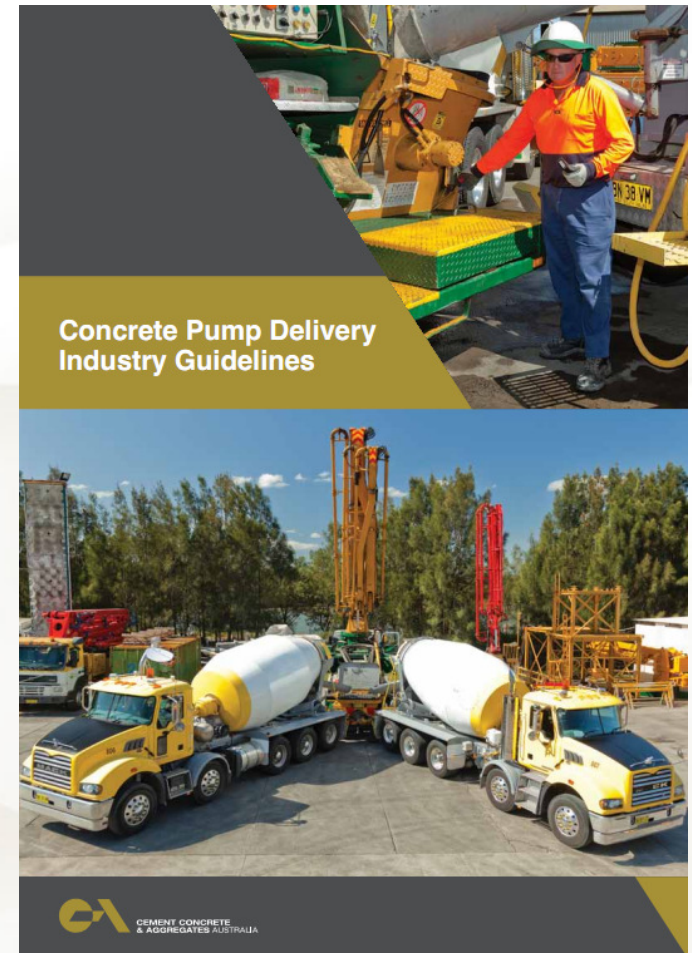


# DISCHARGING INTO PUMP HOPPERS



# DISCHARGING INTO PUMP HOPPERS

- A new CCAA industry guideline has been developed in consultation with industry
- Provides guidance for the safe operation and maintenance of concrete pumping equipment
- Aims for a safe work environment for all workers, focusing on agitator drivers
- Outlines key points to do the job safely





# DISCHARGING INTO PUMP HOPPERS

## 1. REVERSING INTO POSITION

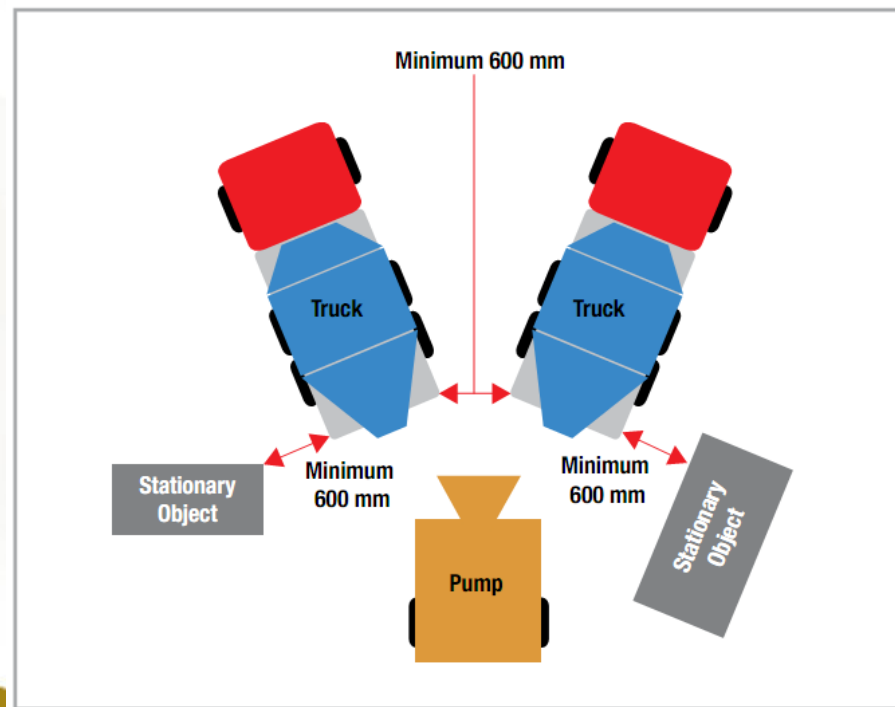
- Use a spotter to guide back onto the hopper
- Get eye contact with the spotter
- Only get direction from one spotter
- Stop if uncertain on directions
- No see spotter = no move
- Check other workers clear of area



# DISCHARGING INTO PUMP HOPPERS

## 1. REVERSING INTO POSITION (cont.)

- Where 2 trucks are delivering:
  - Minimum of 600mm between trucks
  - Trucks at correct angle of about 45 degrees



# DISCHARGING INTO PUMP HOPPERS

## 2. CONDITION OF PUMP

- Check condition of pipes, clamps and that safety pins are in place
- Let the person responsible for the site know of your safety concerns so it can be fixed straight away
- Contact the batch plant if there are any major concerns
- If possible, take a photo of your concern and send it to the batch plant



# DISCHARGING INTO PUMP HOPPERS

## 3. DISCHARGING INTO THE HOPPER

- Stand to the side of the truck
- No safety grate on the hopper = no concrete
- Ensure concrete level is maintained in the hopper to prevent blowback
- Know where the emergency stop button is
- No water to be added to the concrete without approval
- Be aware of slippery surfaces – use 3 points of contact

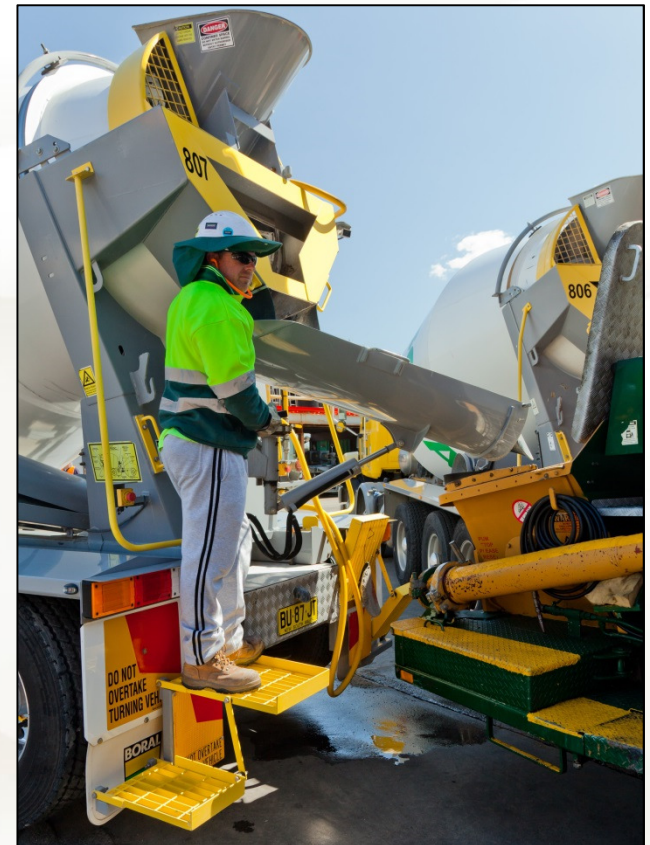




# DISCHARGING INTO PUMP HOPPERS

## 4. CLEANING CHUTES & BLOWBACK

- Ensure easy access to clean chute
- Avoid straining
- Blowback is only to be done if:
  - Company permits it
  - Written approval provided
  - Everyone follows the agreed procedure



# DISCHARGING INTO PUMP HOPPERS

## 5. REFRESH YOUR MEMORY

- Scan the code with your smart phone to view the movies
- Read the Industry Guide
- Use the standard forms in the Guide
- Following these basic steps will help to ensure you go home safe each night

